

Class A 75,000 Square Foot Professional Office Building

Exposition Centre

Convenient Central Location in the Heart of Sacramento



NEWMARK

EXCLUSIVELY
MARKETED BY:

Todd Eschelman

916.569.2347

todd.eschelman@nrmk.com

CA RE License #01051148

Kirk Lange

916.569.2331

kirk.lange@nrmk.com

CA RE License #00870313

Jack Blackmon

916.569.2372

jack.blackmon@nrmk.com

CA RE License #01999561



BASIN STREET
PROPERTIES

PointWestPortfolio.com

Timeless brick and glass architecture



Units from ±1,378 RSF - ±15,533 RSF

- Onsite conference room
- Shaded outdoor patio areas
- Located within minutes of Sacramento
- Numerous restaurants and retail services immediately adjacent to the property
- Immediate freeway access to Business Hwy 80
- Short walk to Arden Fair Mall
- Abundant onsite parking free of charge
- Building and monument signage
- Cafe and fitness center within parking lot
- Expansive windowline
- Renovated common areas

NEW: Concierge Services now available on demand for tenant business services, family entertainment and travel arrangements.

Visit Basin-Street.com/Concierge for more info.



“You’ve got a great team here, and it really is a pleasure to work at this excellent and ever-improving site. I’ve been the boss of a few places around the state, and I’ve certainly dealt with my share of landlords over the years, but I’d say that dealing with Basin Street has definitely been my best experience so far.”

- Phil Bonnet, Executive Director
Alta California Regional Center

“Thank you for the communication. I oversee multiple offices and this is, by far, the best communication we have received regarding property protocol. I appreciate it.”

- Nick Cecchetti, Regional Director
Cornerstone Staffing Solutions

1601 Response Road, Sacramento, CA Exposition Centre



PointWestPortfolio.com

Five-Story Class A Office Building



EXCLUSIVELY
MARKETED BY:

Todd Eschelman
916.569.2347
todd.eschelman@nrmk.com
CA RE License #01051148

Kirk Lange
916.569.2331
kirk.lange@nrmk.com
CA RE License #00870313

Jack Blackmon
916.569.2372
jack.blackmon@nrmk.com
CA RE License #01999561

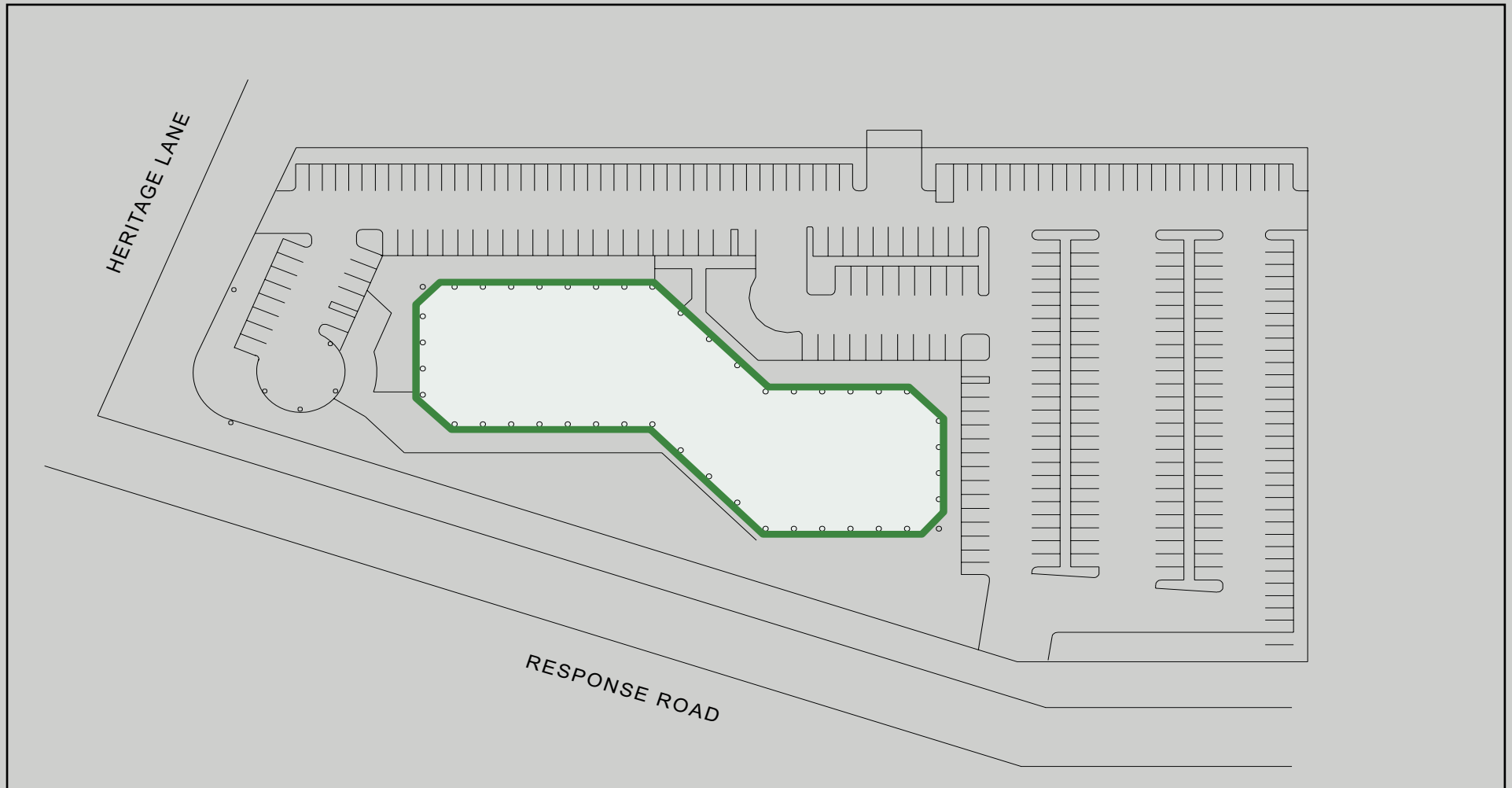
1601 Response Road, Sacramento, CA

Exposition Centre



PointWestPortfolio.com

Site Plan



NEWMARK

EXCLUSIVELY
MARKETED BY:

Todd Eschelman
916.569.2347
todd.eschelman@nrmk.com
CA RE License #01051148

Kirk Lange
916.569.2331
kirk.lange@nrmk.com
CA RE License #00870313

Jack Blackmon
916.569.2372
jack.blackmon@nrmk.com
CA RE License #01999561

1601 Response Road, Sacramento, CA Exposition Centre

PointWestPortfolio.com

Amenities Aerial & Location Map



1601 Response Road, Sacramento, CA

Exposition Centre



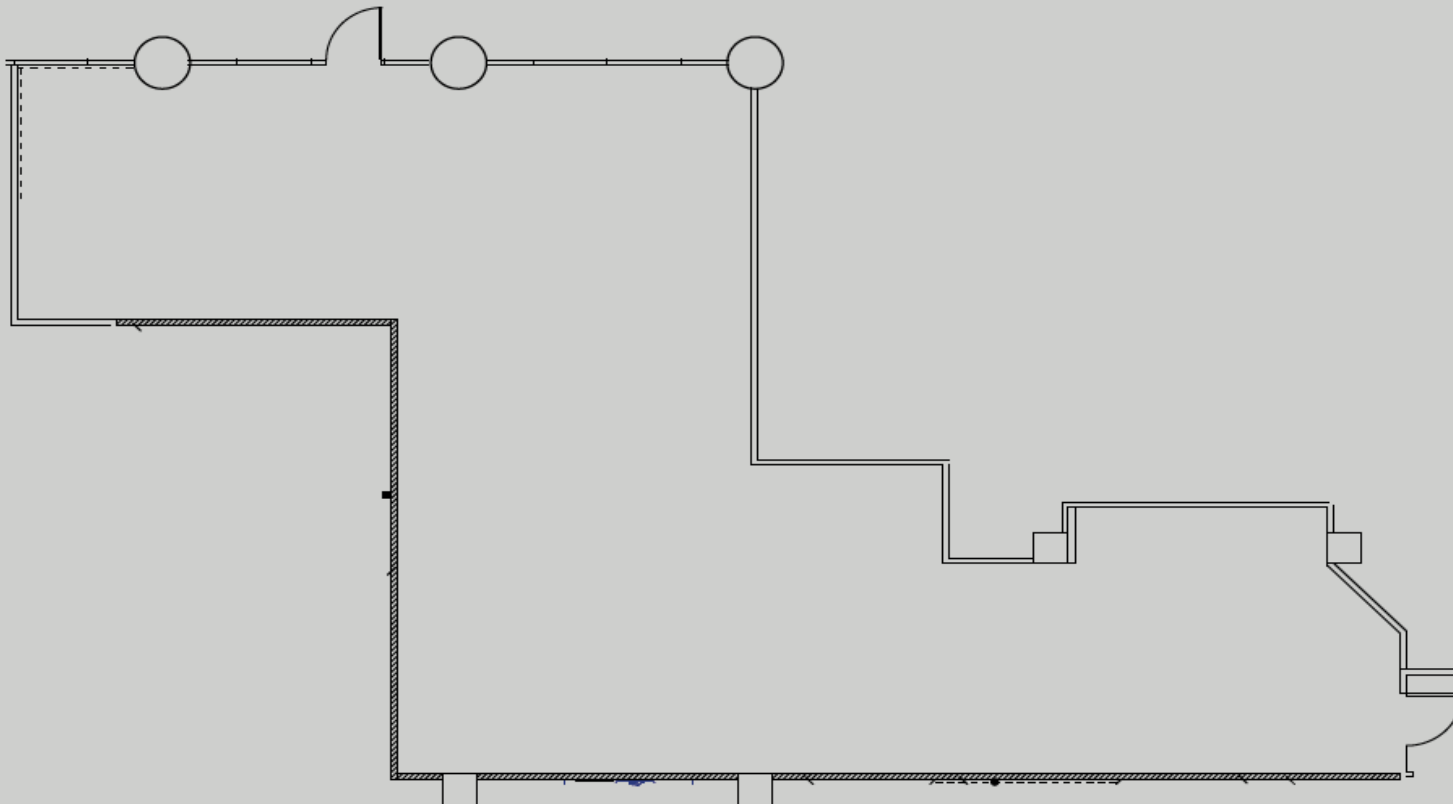
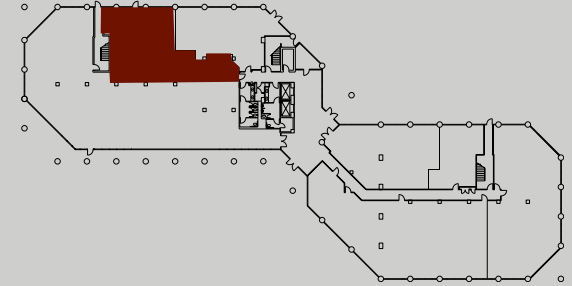
BASIN STREET
PROPERTIES

PointWestPortfolio.com

1,674 RSF

SUITE 120

FIRST FLOOR



NEWMARK

EXCLUSIVELY
MARKETED BY:

Todd Eschelman
916.569.2347
todd.eschelman@nrmk.com
CA RE License #01051148

Kirk Lange
916.569.2331
kirk.lange@nrmk.com
CA RE License #00870313

Jack Blackmon
916.569.2372
jack.blackmon@nrmk.com
CA RE License #01999561

1601 Response Road, Sacramento, CA Exposition Centre

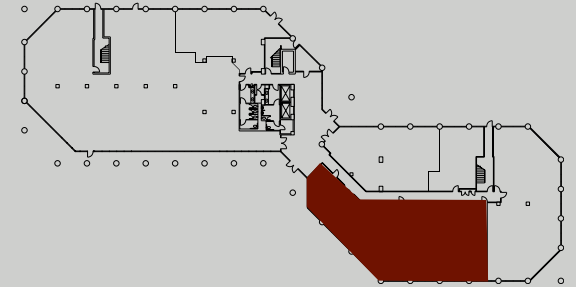
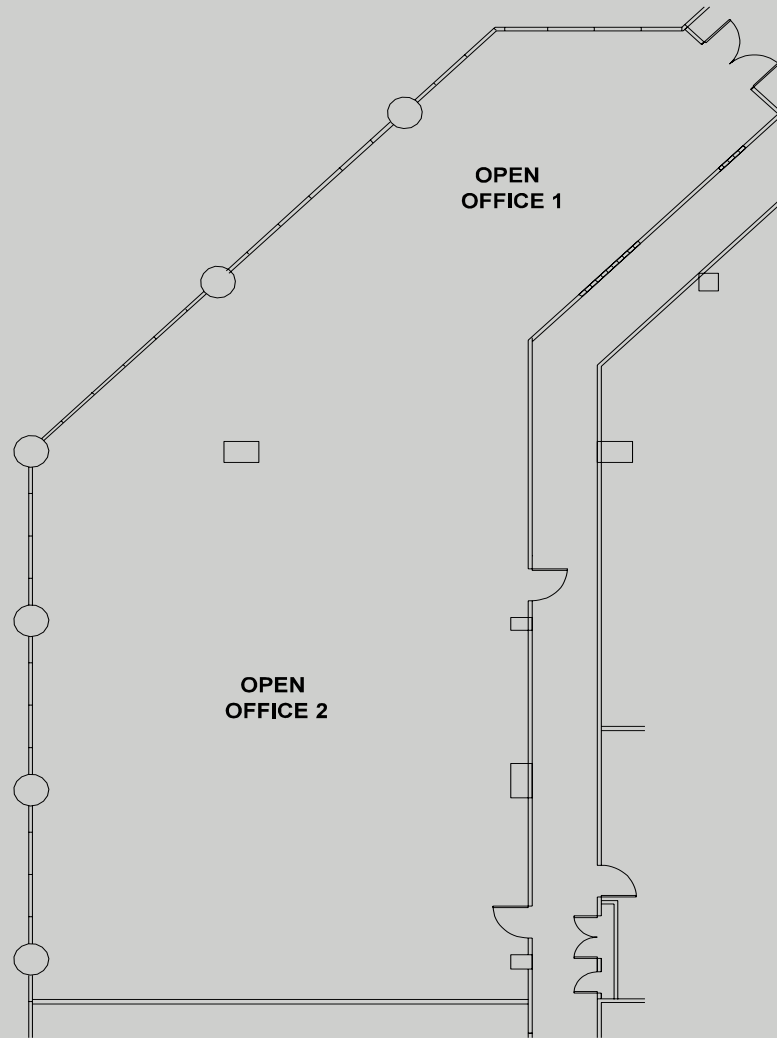


PointWestPortfolio.com

4,006 RSF

SUITE 160

FIRST FLOOR



EXCLUSIVELY
MARKETED BY:

Todd Eschelman
916.569.2347
todd.eschelman@nrmk.com
CA RE License #01051148

Kirk Lange
916.569.2331
kirk.lange@nrmk.com
CA RE License #00870313

Jack Blackmon
916.569.2372
jack.blackmon@nrmk.com
CA RE License #01999561

1601 Response Road, Sacramento, CA

Exposition Centre

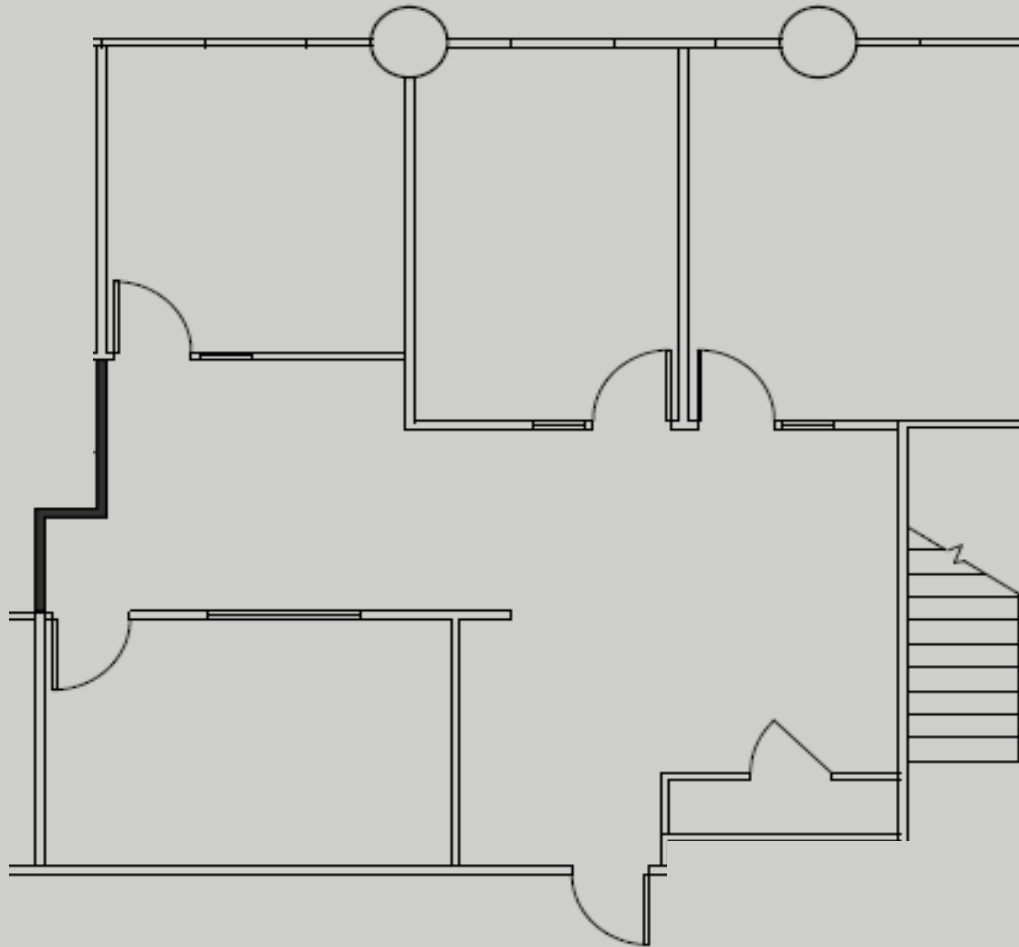
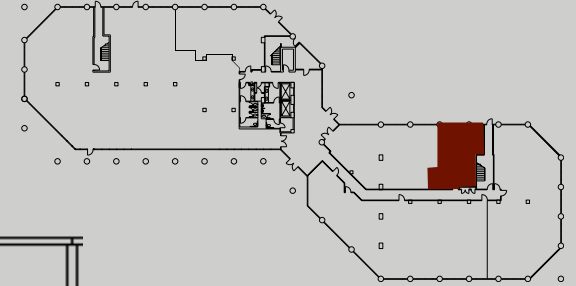


BASIN STREET
PROPERTIES

PointWestPortfolio.com

1,378 RSF
SUITE 180

FIRST FLOOR



NEWMARK

EXCLUSIVELY
MARKETED BY:

Todd Eschelman
916.569.2347
todd.eschelman@nrmk.com
CA RE License #01051148

Kirk Lange
916.569.2331
kirk.lange@nrmk.com
CA RE License #00870313

Jack Blackmon
916.569.2372
jack.blackmon@nrmk.com
CA RE License #01999561

1601 Response Road, Sacramento, CA
Exposition Centre

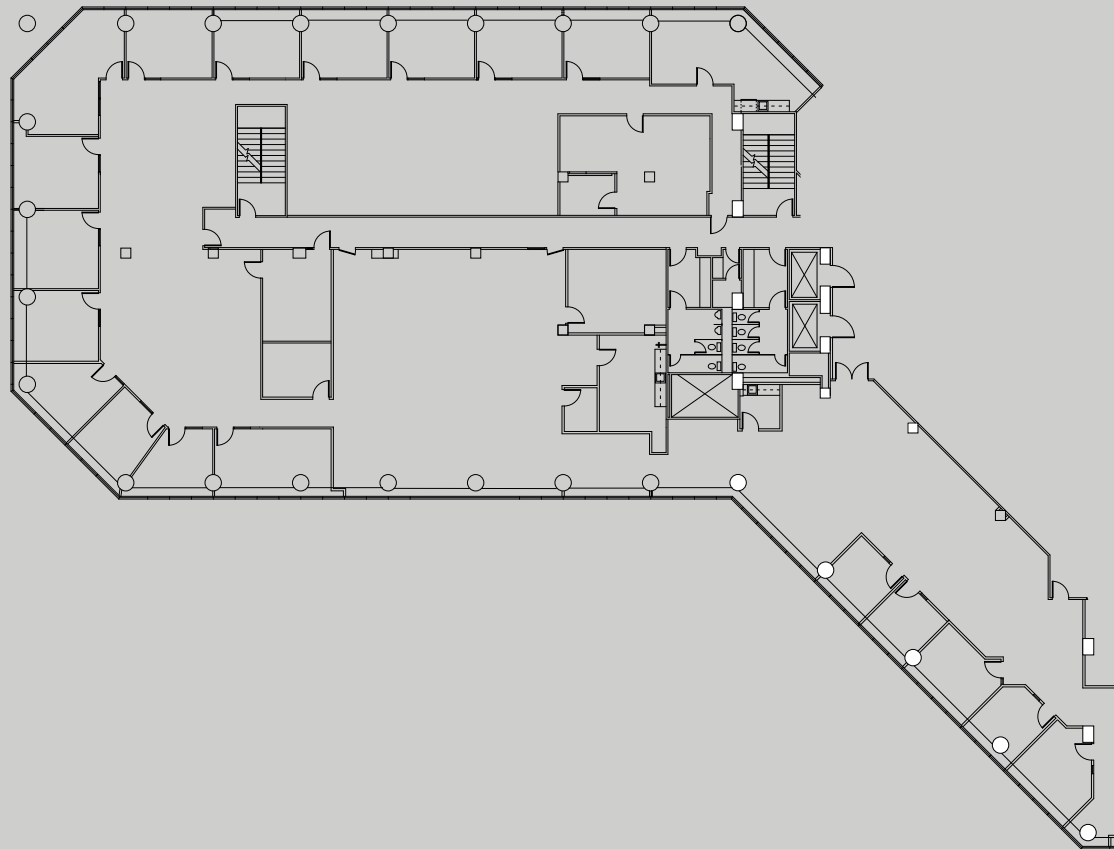
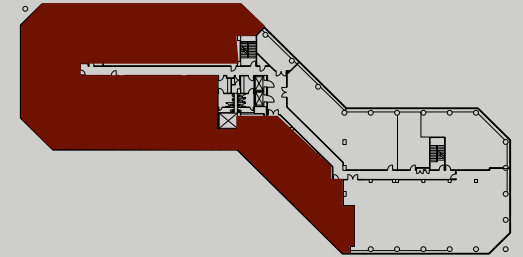


BASIN STREET
PROPERTIES

PointWestPortfolio.com

15,533 RSF
SUITE 200

SECOND FLOOR



NEWMARK

EXCLUSIVELY
MARKETED BY:

Todd Eschelman
916.569.2347
todd.eschelman@nrmk.com
CA RE License #01051148

Kirk Lange
916.569.2331
kirk.lange@nrmk.com
CA RE License #00870313

Jack Blackmon
916.569.2372
jack.blackmon@nrmk.com
CA RE License #01999561

1601 Response Road, Sacramento, CA

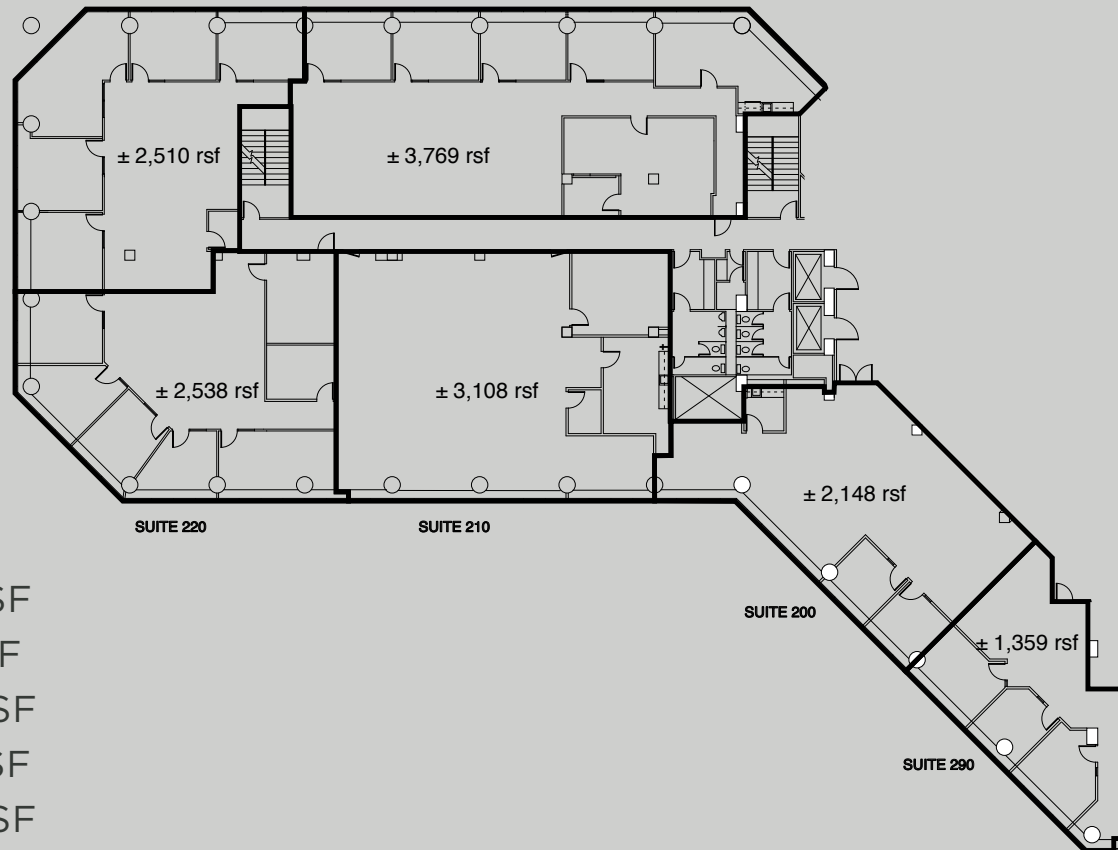
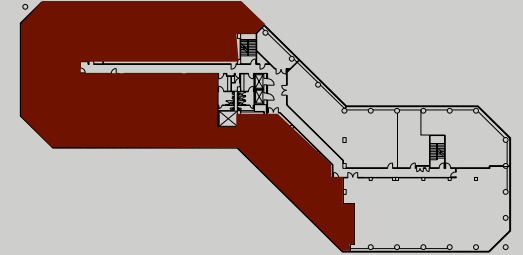
Exposition Centre

PointWestPortfolio.com

15,533 RSF

SUITE 200 (Divisible Options)

SECOND FLOOR



Divisible Options

- Suite 200: ±2,148 RSF
- Suite 210: ±3,108 RSF
- Suite 220: ±2,538 RSF
- Suite 230: ±2,510 RSF
- Suite 240: ±3,769 RSF
- Suite 290: ±1,359 RSF

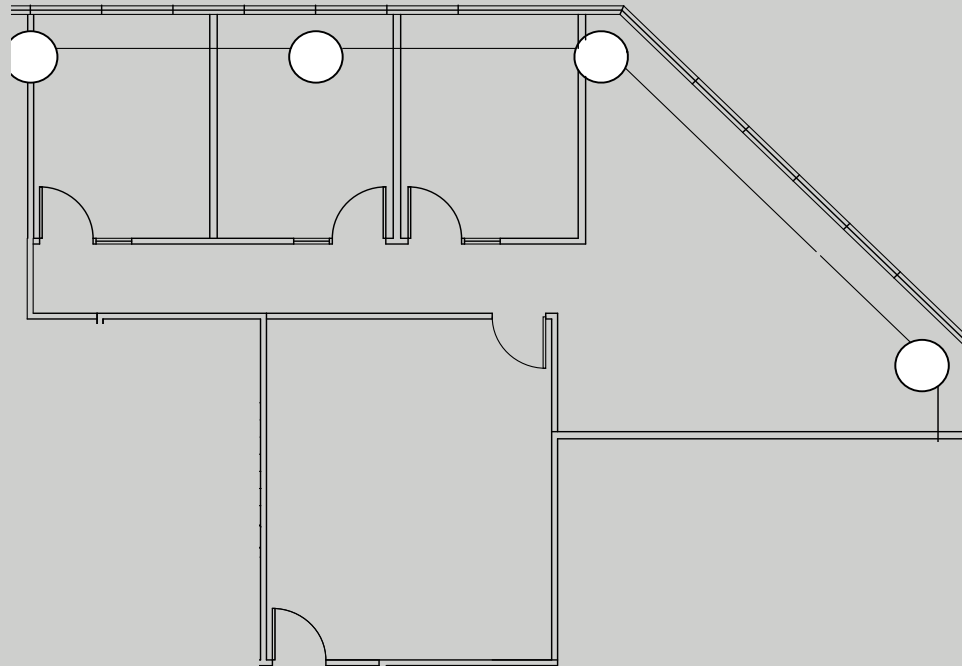
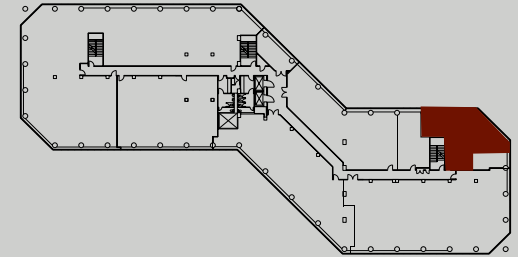
1601 Response Road, Sacramento, CA
Exposition Centre



PointWestPortfolio.com

1,432 RSF
SUITE 255

SECOND FLOOR



EXCLUSIVELY
MARKETED BY:

Todd Eschelman
916.569.2347
todd.eschelman@nrmk.com
CA RE License #01051148

Kirk Lange
916.569.2331
kirk.lange@nrmk.com
CA RE License #00870313

Jack Blackmon
916.569.2372
jack.blackmon@nrmk.com
CA RE License #01999561

1601 Response Road, Sacramento, CA
Exposition Centre

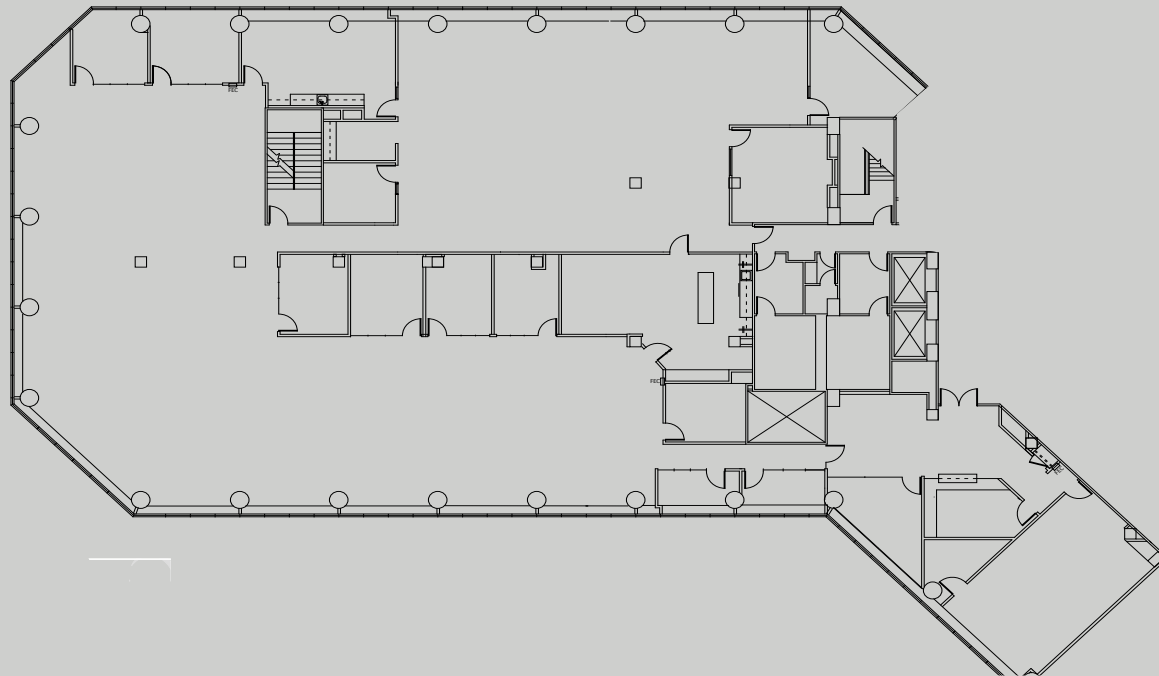
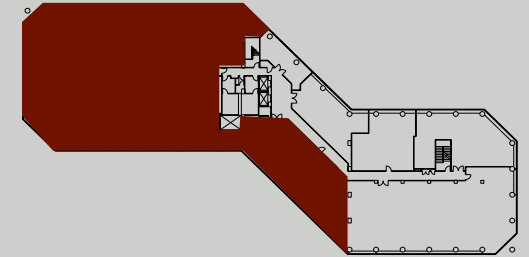


PointWestPortfolio.com

14,335 RSF

SUITE 300

THIRD FLOOR



EXCLUSIVELY
MARKETED BY:

Todd Eschelman
916.569.2347
todd.eschelman@nrmk.com
CA RE License #01051148

Kirk Lange
916.569.2331
kirk.lange@nrmk.com
CA RE License #00870313

Jack Blackmon
916.569.2372
jack.blackmon@nrmk.com
CA RE License #01999561

1601 Response Road, Sacramento, CA
Exposition Centre

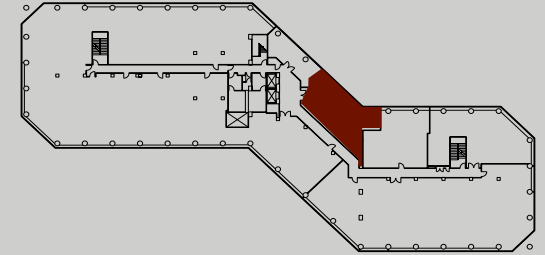
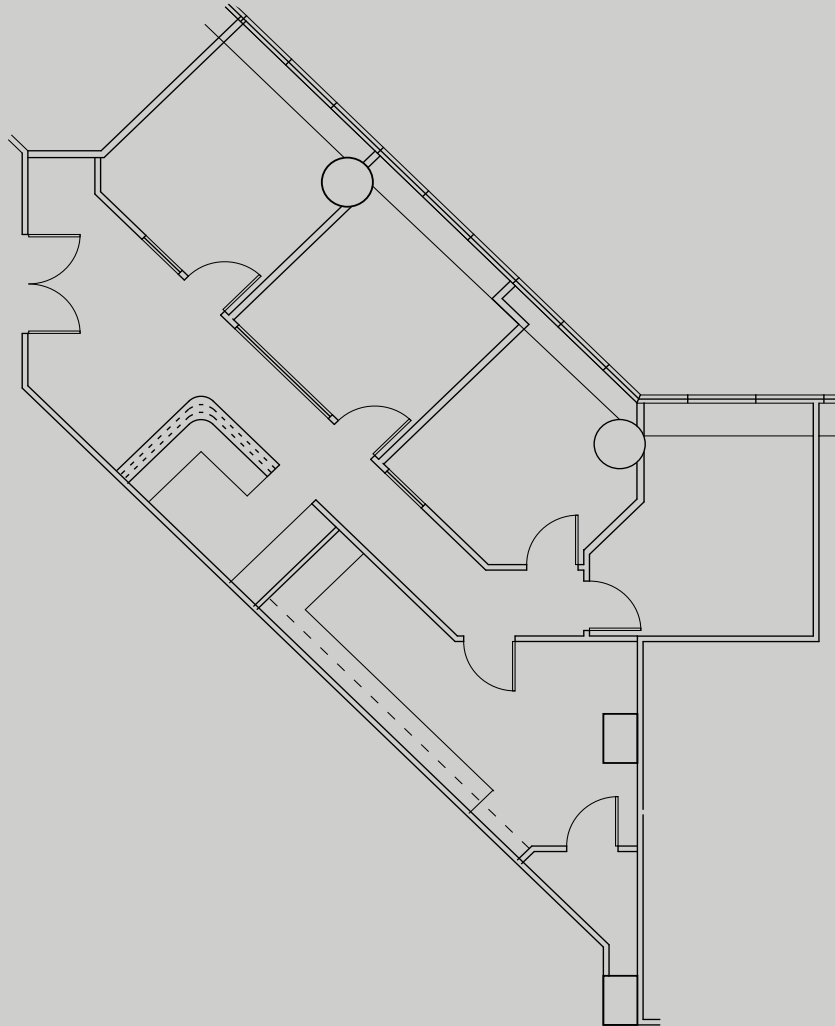


BASIN STREET
PROPERTIES

PointWestPortfolio.com

1,430RSF
SUITE 360

THIRD FLOOR



NEWMARK

EXCLUSIVELY
MARKETED BY:

Todd Eschelman
916.569.2347
todd.eschelman@nrmk.com
CA RE License #01051148

Kirk Lange
916.569.2331
kirk.lange@nrmk.com
CA RE License #00870313

Jack Blackmon
916.569.2372
jack.blackmon@nrmk.com
CA RE License #01999561

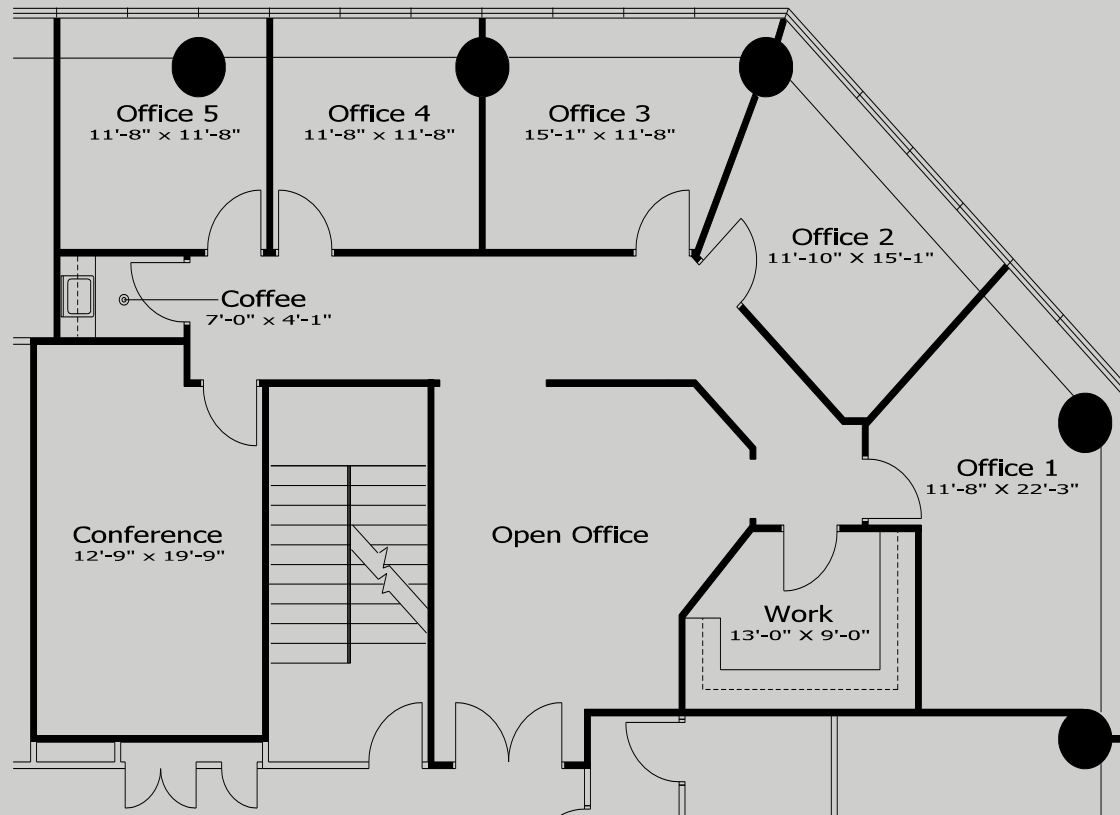
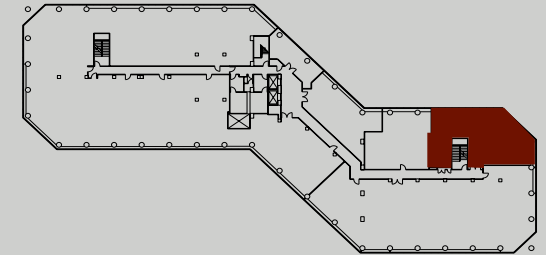
1601 Response Road, Sacramento, CA Exposition Centre



PointWestPortfolio.com

2,159 RSF SUITE 390

THIRD FLOOR



EXCLUSIVELY
MARKETED BY:

Todd Eschelman
916.569.2347
todd.eschelman@nrmk.com
CA RE License #01051148

Kirk Lange
916.569.2331
kirk.lange@nrmk.com
CA RE License #00870313

Jack Blackmon
916.569.2372
jack.blackmon@nrmk.com
CA RE License #01999561